



## TRILUX Medical Aurinio® L 50

The examination light with LED technology



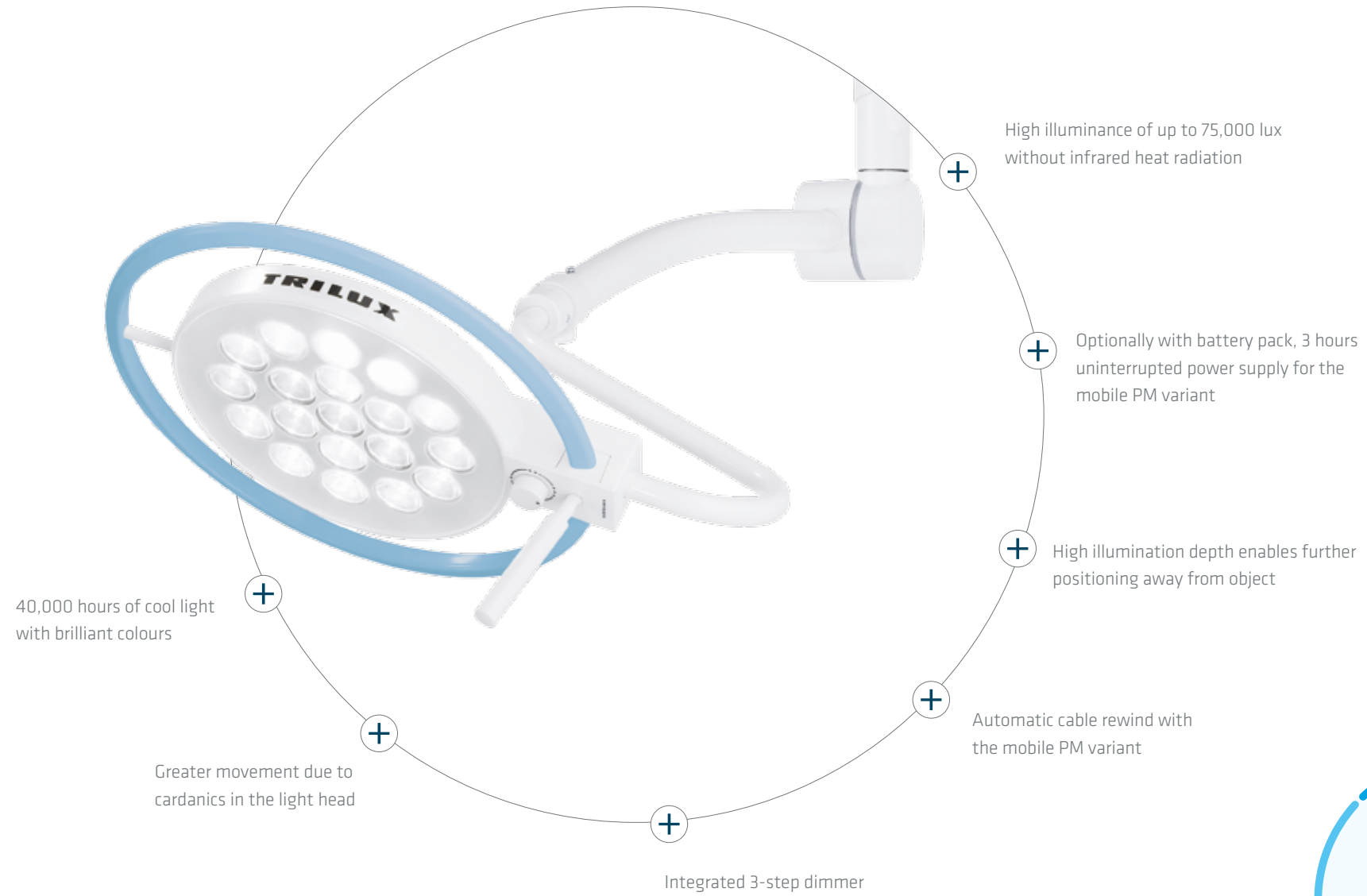
TRILUX Medical Aurinio® L 50

## LED examination light that can do more.

The Aurinio® L 50 supplies brilliant daylight with high colour rendering. The light is cool thanks to lack of infrared radiation, illuminance is high, and energy consumption low.

The low maintenance costs with high life expectancy are especially welcome. Aurinio® L 50 is available as a ceiling / wall light or mobile light, each in premium or standard variants. Both variants feature an integrated dimmer. The premium version offers all-round railing for all models and also automatic cable rewind for the mobile lights.

LED



FLEXIBLE USE



TRILUX Medical Aurinio® L 50

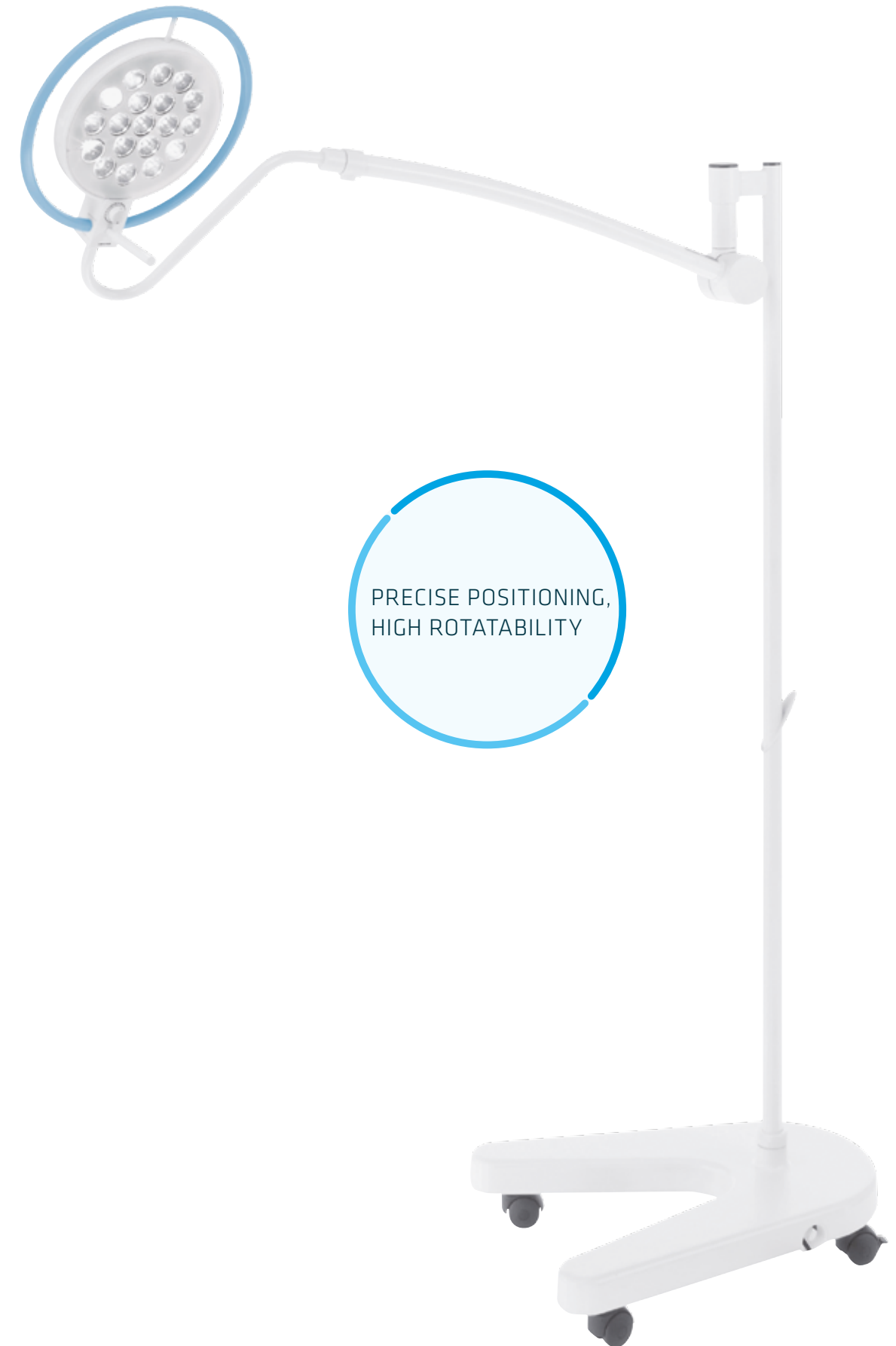
## Mobile light, that really **works everywhere.**

In the ambulance, the emergency ward, the OR section or the examination room – the Aurinio® L 50 certainly lives up to its name. Slender and agile, it gets everywhere where good viewing conditions are vital. And a particular benefit is its quick deployability, impressive mobility and high rotatability.

Ergonomic handling // Brilliant, cool daylight with high colour rendering // High economy // High illuminance without infrared heat radiation // High depth of illumination // Integrated dimmer // Optional: single-use sterile handle // Available with supplementary battery system for up to 3 hours uninterruptable power supply

### RAIL COLOURS

grey ■ blue ■ green ■



TECHNICAL DATA AURINIO® L 50	PM	SD
Illuminance at distance of 1 m	75,000 lx	55,000 lx
Illuminance at distance of 0.75 m	110,000 lx	90,000 lx
Colour temperature	4,800 K	4,800 K
Colour rendering index R <sub>a</sub>	95	95
Colour rendering index R <sub>9</sub>	96	96
Light field diameter	160 mm	160 mm
Illumination depth	1,400 mm	1,400 mm
Integrated 3-step dimmer	40,000 / 60,000 / 75,000 lx	30,000 / 40,000 / 55,000 lx
Service life of LEDs	> 40,000 h	> 40,000 h
Dimensions of light body	Diameter 240 mm	Diameter 240 mm
Height adjustment of light body	1,300 mm	1,300 mm

TECHNICAL DATA BACK-UP SYSTEM	PM
Automatic switchover with mains failure	
Switch over time	< 0.5 seconds
Charging	Parallel, controlled charging of battery charge duration < 5 h
Protection	Deep discharge protection
Signalling	Acoustic and/or optical signalling of battery status

TECHNICAL DATA POWER SUPPLY	PM
Input voltage	88 ~ 264V AC, I <sub>max</sub> 1.4A
Frequency	47 ~ 63Hz
Light output ratio	> 88%
Output voltage	22V
Protection features	Overcurrent protection, overvoltage protection, overtemperature protection, short-circuit protection

TECHNICAL DATA BATTERY	PM
The battery used requires no maintenance	
Capacity	17 Ah (self-sufficient operation 3 h)
Working life	3,000 charging cycles

#### TRILUX Medical GmbH & Co. KG

Huettenstrasse 21

D-59759 Arnsberg

Tel.: +49 (0) 29 32 . 301 - 100

Fax: +49 (0) 29 32 . 301 - 122

info-medical@trilux.de

www.trilux-medical.com

All technical data and the weight and dimensional specifications are carefully compiled, but no liability is accepted for errors. We reserve the right to make changes that reflect improvements.

Product in some cases are shown with accessories that must be ordered separately. Illustrations may show products with optional equipment.